

Flood & Water Management Act 2010

**Ian Welsby Head of Flood Risk
Management Lancashire County Council**

- Flooding event 2007
- Government commissioned an independent review by Sir Michael Pitt
- New flood risk management responsibilities for local authorities and other organisations
- Flood Risk Regulations 2009,
- Flood & Water Management Act 2010,
- Flood Risk Management Overview & Scrutiny (England) Regulations 2011.

The upper tier and unitary authorities are designated as "Lead Local Flood Authorities" (LLFA) under the Act, and take on a number of new duties

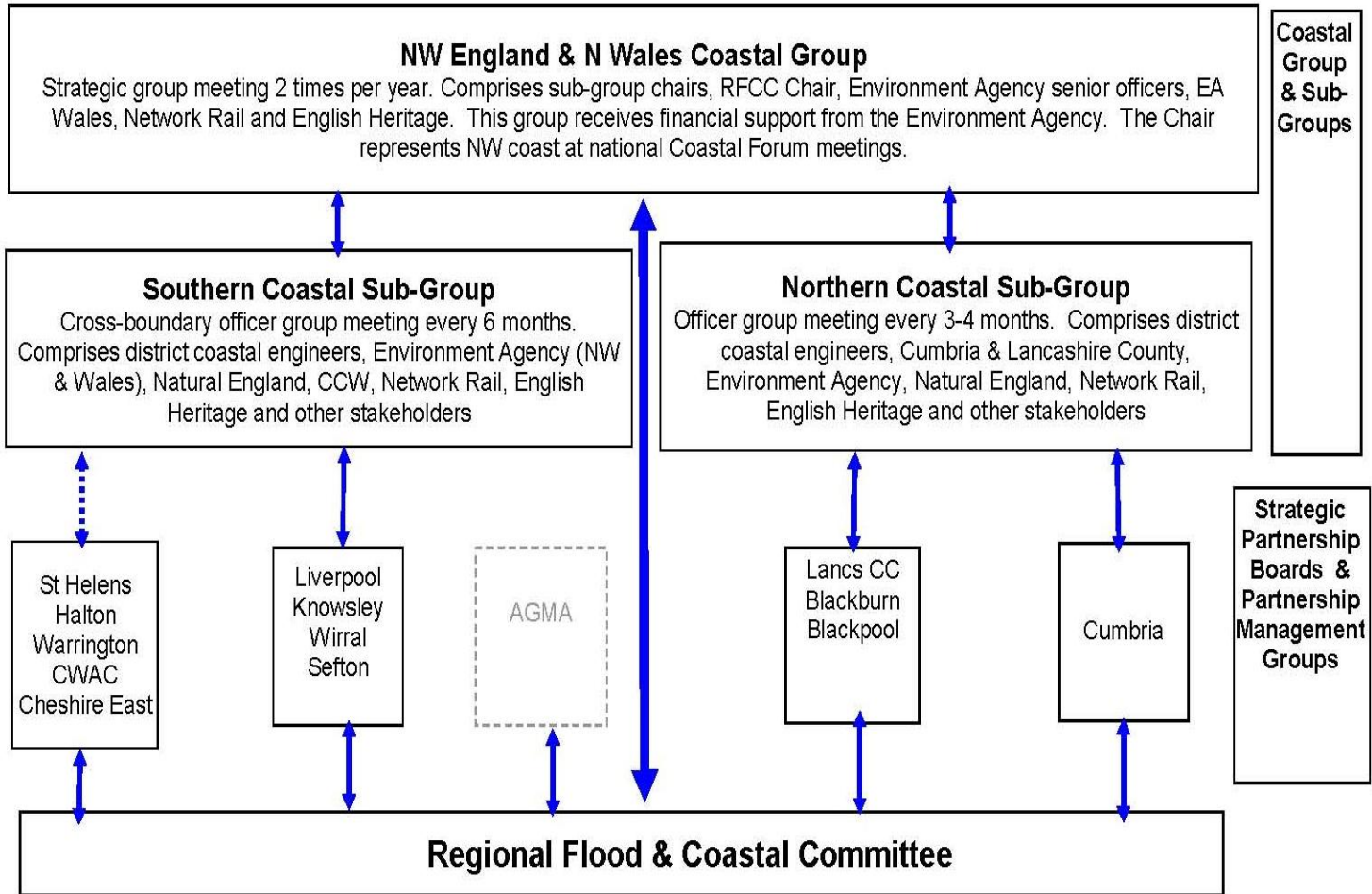
- prepare a local flood risk management strategy for its area, to complement the EA national strategy.
- Where flooding occurs there is a duty to investigate, to the extent the LLFA considers necessary.
- Duty to develop & maintain a register of structures or features which may impact on flood risk.

- Responsible for consenting works to ordinary watercourses
- Approval body for Sustainable drainage schemes (April 2014), along with a duty to adopt
- Powers to request information from 3rd parties in connection with flood risk management duties.
- Reservoirs -The Flood and Water Management Act 2010 amends the Reservoirs Act 1975. It introduces new arrangements for reservoir safety based on risk rather than the size of the reservoir

PARTNERSHIP WORKING

- Partnership delivery is a key expectation of the Flood Risk Management legislation.
- Flood Risk Management Strategy for Lancashire
- Partners include the EA, UU, District Councils, LLFA's
- Technical Officers meetings Making Space for Water
- Fylde Peninsular Water Management Group (EA, UU, Blackpool Council, Wyre & Fylde Borough Councils, Lancashire County Council, Keep Britain Tidy)

The Coastal Group was reconstituted in 2008 as part of the EASO. Defra recommended a smaller number of strategic groups to give sound advice on coastal issues and be a strong influencer in optimising strategic and sustainable policies, plans and programmes to best manage the risk from sea flooding and coastal erosion. The groups provide a forum for coastal practitioners to discuss problems and share best practice. The sub-groups provide an opportunity for districts to discuss operational issues - the sub-groups are autonomous and funded by member subscriptions



Regional Flood & Coastal Committee (RFCC)
 Regional governance and funding decisions
 10 LLFA members split between the 5 partnerships
 + 8 Special Interest members appointed by the EA

Strategic Partnership Groups (x5)
 Cumbria, Lancashire, Merseyside,
 Cheshire Mid Mersey & AGMA
 Meeting 2/3 times per year between senior officers Elected Members +
 Environment Agency, United Utilities
 2/3 Meetings between senior officers as appropriate
 Environment Agency, United Utilities

Partnership Management Group (x5)
 Meeting every 6-12 weeks
 Technical and operational leads/managers + EA and UU
 Coordinate delivery, share skills and establish priorities for joint working.
 Includes District representatives who lead on local MSFWGs
 (For Greater Manchester this is the T-FROG)

EA Match Funded Posts
 Local Authority flood risk coordinator

23 No
 LLFAs
 in 5
 groups

Lancs CC
 Blackburn
 Blackpool

Cumbria

Liverpool
 Knowsley
 Wirral
 Sefton

St Helens
 Halton
 Warrington
 CWAC
 Cheshire East

Bolton
 Manchester
 Rochdale
 Tameside
 Stockport
 Bury
 Oldham
 Salford
 Trafford
 Wigan

Making Space for Water Groups / Local Flood Groups
 Meeting every 6-8 weeks
 Technical and operational leads/managers + EA and UU
 Identify local flood hot spots and work with partners to identify schemes for the bidding process.

Current MSFWGs
 Blackburn w' Darwen - West Lancashire - Burnley - Blackpool - Chorley - Fylde -Hyndburn -
 Lancaster City Council - Pendle - Preston City Council - Ribble Valley - Rossendale - South
 Ribble - Wyre - Carlisle - Eden - Copeland - Allerdale - Barrow - South Lakes

Strategic Partnership Boards
 • To support the EA and RFCC in delivering the strategic overview and ensure risk

Fylde Peninsular Water Management Action Plan

Flood Risk Management Strategy for Lancashire is assisting in delivering the Objectives in the FPWM Action Plan some examples are:

- Reducing the number & volumes of spills – SuDs, storage solutions
- Management of surface water at new developments meeting best practice standards.- controlling rates of run off
- Working together with other FRMA's to investigate & manage interactions between coastal & local flood risks

- Integrate Social, Environmental & Economic improvements into Local Flood Risk
- Take account of Climate Change when fulfilling duties & responsibilities of Flood Risk management.

Establish Partnerships that Work

The Fylde Peninsular Water Management Group